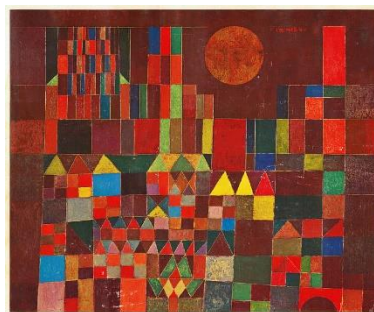




Theme Overview	Project Outcomes
In this sequence of lessons, the children will learn about the artist Paul Klee and learn about his abstract art. To use knowledge of castles and build a model castle, using clay.	To produce their own version of the picture, castle and Sun, using pastels. To block colour. To create a clay castle, using clay joining techniques

Skills Focus	Artist, Craftworker or Designer
Main Skills Focus:	Paul Klee
<ul style="list-style-type: none"> To learn about the Paul Klee To compare different artist's styles and techniques. To use pencils and pastels in my drawings. To show patterns and textures in my drawings by adding line and colour. To learn how other artists have used texture, colour, pattern and shape in their work. To create a clay castle To learn and use joining techniques for clay To create a fantasy art picture of a dragon 	Castle and Sun



	Sequence of Learning	
	<p>Lesson 1 LI: To learn about the artist Paul Klee. To learn about abstract art. To learn how artists use texture, colour and pattern.</p> <p>By the end of this session the children should be able to talk about Paul Klee and give some facts about him.</p> <p>They will learn that he is known as an 'abstract' artist.</p> <p>To look at the artwork, 'Castle and Sun' and discuss the use of line, shape and colour. Colours only touch each other at the points, not at the sides of the shapes.</p> <p>Children to plan their own 'castle' picture using a variety of shapes and to consider the parts of a castle they would like included.</p> <p>Using coloured paper, cut out shapes and glue them into your sketch books to create a small plan of what you would like your final picture to look like.</p>	<p>Lesson 2 * LI: To use pencils and pastels to create a castle picture in the style of Paul Klee To block colour to create an effect.</p> <p>Recap on the learning about artist Paul Klee.</p> <p>Look at the work Castle and Sun and discuss the use of colour. The blocks of colour only touch on the points of the shapes, not on the sides.</p> <p>How many different shapes can they see? Which shapes are used to represent which parts of the castle? How does the picture make you feel? Do you like this artwork? Why?</p> <p>Using the pictures they created in the previous lesson, sketch the shapes out onto cartridge paper and then using pastels colour in blocks of colour, aiming for colours to only meet on the points of shapes.</p>

- Linked Skills Focus:**
- I comment on differences in others' work and suggest ways of improving own work.
 - To use art to express ideas and feelings

- Learning about great Artists, craftworkers and Designers:**
- Paul Klee

Teaching art and design skills and techniques at Mrs Bland's Infant School.

- To know and understand about great artists, craft makers and designers.
- Identify and exemplify the skills and knowledge
- Teach the children the skills and give them the opportunities to practise, refine and evaluate these.
- Modelling how to apply and combine skills in small steps, giving pupils confidence to create a final piece of artwork or a product.

- Lesson 3**
LI: using clay, create a small model of a castle on a clay tile. To join clay using the correct joining techniques.

- Can the children remember any facts about clay, from Y1?
- Recap and learn more facts about the properties of clay.
- Children to look at some pictures of castles and discuss the different features of castles.
- In sketch books, draw a plan of a castle to make in clay. Can the children include at least three castle features.
- Watch a demonstration of a clay worker making a clay model.
- Focus on joining techniques of: score, slip, stick, smooth
- Children to make their own castles.

<ul style="list-style-type: none"> Giving children opportunities to express themselves creatively 	<p>As a class look at the completed artwork and discuss which picture you really like and why.</p> <p>Lesson 4 LI: To know a technique to join clay To paint a model castle with realistic colours</p> <p>Recap on the previous learning. Quiz on Paul Klee Quiz on process of joining clay</p> <p>Look at pictures of real castles. Discuss the materials used and the colours of the materials and any landscape surrounding the castle.</p> <p>On their castle plan in their sketch books, colour the plan in the colours they would like to use on their castle models.</p> <p>Paint their castle models, using the colours used on their castle designs, in their sketch books.</p> <p>Take a photo of their castles and put the picture in their sketch books beside their designs.</p>	<p>Lesson 5 LI: to look at the work of an illustrator who creates fantasy dragon art. To design and create their own dragon art</p> <p>Look at the work of Graeme Aymer 'Dragon Art'</p> <p>Compare various illustrations and compare the colours, lines and detail used to create the pictures.</p> <p>Children to discuss whether the pictures make the dragons look friendly or fierce and what did the artist add to the picture to create these effects.</p> <p>Look at the use of shading and colour.</p> <p>Watch a demonstration of shading with a sketching pencil.</p> <p>In sketchbooks, have a go at sketching a horn on a dragon and shading it to make it look round and sharp.</p> <p>Sketch a dragon and have a go shading with the sketching pencil.</p> <p>Add some colour using colour pencils.</p> <p>As a class, share pictures with another child and talk about what went well with the shading and what was tricky.</p>	<p>Lesson 6 LI: To reflect and assess what has been learnt. To evaluate how well various watercolour techniques have been used to create mood and effect.</p> <p>In this final session, children will reflect on their artwork and learning experiences. Using the assessment criteria to evaluate their progress and create goals for their continued development as artists.</p> <p>Children to look at the painting of Paul Klee and discuss the techniques they have learnt. In pairs review their sketch books to discuss:</p> <ul style="list-style-type: none"> how they improved their techniques and which technique worked well to create the desired effect. Which techniques need more practice? Comparing their Castle picture, dragon art and clay model: Which of their finished pieces are they most happy with and why? <table border="1" data-bbox="1574 651 2190 1398"> <thead> <tr> <th data-bbox="1574 651 1879 683">Outcome</th> <th data-bbox="1879 651 2190 683">Assessment Criteria</th> </tr> </thead> <tbody> <tr> <td data-bbox="1574 683 1879 804">Observation skills</td> <td data-bbox="1879 683 2190 804">Can identify and name the style of art created by Paul Klee and some facts about his art.</td> </tr> <tr> <td data-bbox="1574 804 1879 1015">Technique</td> <td data-bbox="1879 804 2190 1015">Can use a range of sketching and colour work, using pastels and colour pencils. Join clay to create a model. Create dark and light tones through shading.</td> </tr> <tr> <td data-bbox="1574 1015 1879 1166">Creativity and expression</td> <td data-bbox="1879 1015 2190 1166">Can use blocks of colour to create effect in a picture. To use their imagination to give inspiration to their artwork.</td> </tr> <tr> <td data-bbox="1574 1166 1879 1398">Reflection</td> <td data-bbox="1879 1166 2190 1398">Children complete a self-reflection of their work, summarising the challenges, techniques and learning successes and drawing conclusions about the role of observation and creativity in artwork</td> </tr> </tbody> </table>	Outcome	Assessment Criteria	Observation skills	Can identify and name the style of art created by Paul Klee and some facts about his art.	Technique	Can use a range of sketching and colour work, using pastels and colour pencils. Join clay to create a model. Create dark and light tones through shading.	Creativity and expression	Can use blocks of colour to create effect in a picture. To use their imagination to give inspiration to their artwork.	Reflection	Children complete a self-reflection of their work, summarising the challenges, techniques and learning successes and drawing conclusions about the role of observation and creativity in artwork
Outcome	Assessment Criteria												
Observation skills	Can identify and name the style of art created by Paul Klee and some facts about his art.												
Technique	Can use a range of sketching and colour work, using pastels and colour pencils. Join clay to create a model. Create dark and light tones through shading.												
Creativity and expression	Can use blocks of colour to create effect in a picture. To use their imagination to give inspiration to their artwork.												
Reflection	Children complete a self-reflection of their work, summarising the challenges, techniques and learning successes and drawing conclusions about the role of observation and creativity in artwork												